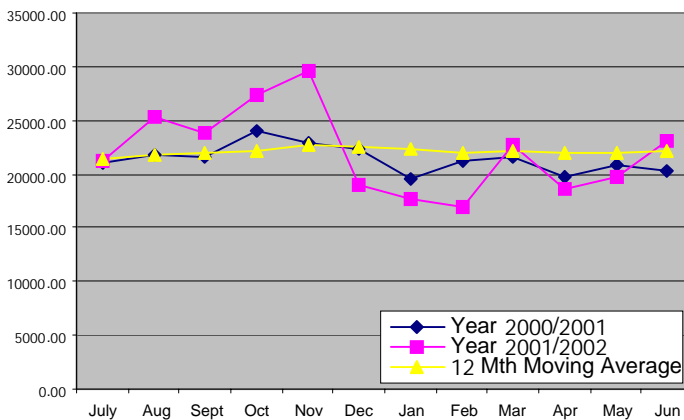
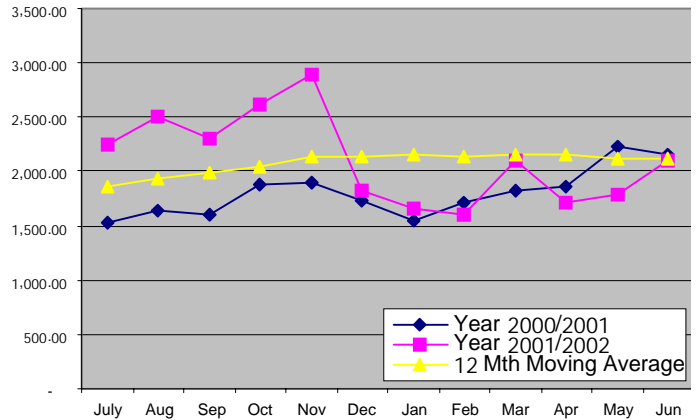


AGGREGATE EXPORT INDEX

	April 2002	May 2002	June 2002	ACTUAL 2002 2th QTR	ACTUAL Jan - Dec 2001	ACTUAL July - 01
Quantity (MT)	18,655.27	19,757.18	23,109.36	61,521.80	269,691.19	21,188.77
% change Previous Year	↓ 5.83%	↓ 5.66%	↑ 13.51%	↓ 0.67%	↑ 10.38%	↑ 4.56%
12 Month Moving Avg	21,980.21	21,877.43	22,106.57	65,960.21		
Value (Thai Baht)	1,719,677,765	1,781,500,902	2,109,188,976	5,610,367,643	25,710,265,995	2,239,657,553
% change Previous Year	↓ 7.31%	↓ 20.05%	↓ 1.80%	↑ 9.9%	↑ 37.67%	↑ 42.22%
12 Month Moving Avg	2,151,418,544	2,113,962,264	2,110,740,063	6,375,902,787		

QUANTITY (MT)

VALUE (MILLION BAHT)


TOP 20 EXPORTING COUNTRIES FOR THAI TUNA INDUSTRY (Based on Qty shipped)

	Country	June 2002		January – June 2002				January – June 2001	
		Quantity (Mt)	Value (Baht)	Quantity (Mt)	% Share	Value (Baht)	% Share	Quantity (Mt)	Value (Baht)
1	UNITED STATES	5,852.48	580,105,538	24,925.60	20.95	2,554,383,463	23.33	24,976.25	2,854,512,976
2	CANADA	2,526.05	254,493,802	10,409.89	8.75	1,106,884,032	10.11	12,017.28	1,248,746,046
3	AUSTRARIA	1,738.05	167,190,847	9,352.11	7.86	926,307,584	8.46	8,793.11	919,222,120
4	JAPAN	1,325.84	157,685,035	7,684.14	6.46	929,244,354	8.49	6,673.82	825,901,308
5	EGYPT	1,171.16	76,595,386	9,469.71	7.96	655,655,409	5.99	14,067.82	869,906,167
6	UNITED KINGDOM	1,036.12	86,342,031	6,441.39	5.41	559,578,043	5.11	5,447.03	444,095,673
7	LIBYA	901.01	66,873,706	4,120.47	3.46	275,913,268	2.52	95.02	5,852,431
8	SAUDI ARABIA	859.18	90,785,538	5,627.15	4.73	578,605,326	5.28	6,994.70	668,529,097
9	GERMANY	676.81	47,299,106	3,360.63	2.82	228,612,194	2.09	5,173.76	323,050,905
10	SWEDEN	420.40	34,073,136	1,482.22	1.25	112,204,829	1.02	1,536.95	123,286,933
11	FINLAND	397.70	31,706,830	1,779.90	1.50	141,917,315	1.30	1,581.79	114,379,375
12	ISRAEL	374.44	30,043,051	1,149.12	0.97	95,416,950	0.87	1,806.92	156,330,373
13	SWITZERLAND	297.97	30,256,012	1,684.57	1.42	178,197,915	1.63	1,469.07	172,340,240
14	NEW ZELAND	274.26	28,991,956	1,520.91	1.28	156,176,699	1.43	1,175.74	119,928,251
15	UAE	278.92	21,911,248	2,357.98	1.98	203,456,381	1.86	1,823.42	170,744,737
16	POLAND	251.79	14,709,100	1,722.33	1.45	105,116,298	0.96	2,322.97	148,215,284
17	NETHERLANDS	248.88	24,105,068	1,671.20	1.40	165,031,359	1.51	2,070.79	203,282,725
18	SYRIA	245.09	15,656,059	2,071.58	1.74	129,096,870	1.18	1,953.90	109,892,082
19	MALAYSIA	224.91	24,993,831	863.23	0.73	96,585,849	0.88	945.35	97,420,382
20	HONG KONG	217.04	24,196,521	1,357.13	1.14	135,596,664	1.24	1,199.30	106,628,457
	TOP 20 TOTAL	19,318.10	1,808,013,801	99,051.26		9,333,980,802		102,124.99	9,682,265,562
	TOP 20 %SHARE	83.53	85.72	83.25	83.25	85.24	85.24	82.80	85.46
	GRAND TOTAL	23,109.36	2,109,188,976	118,976.42	100	10,950,619,647	100	123,341.55	11,329,387,877

NOTE : One Metric Ton is approximately equivalent to 113 cartons of 48/6.5oz canned tuna; 1 USDollar is equivalent to around 40 and 45 Baht in 2000 and 2001 respectively.
SOURCE : The Customs Department (THAILAND)