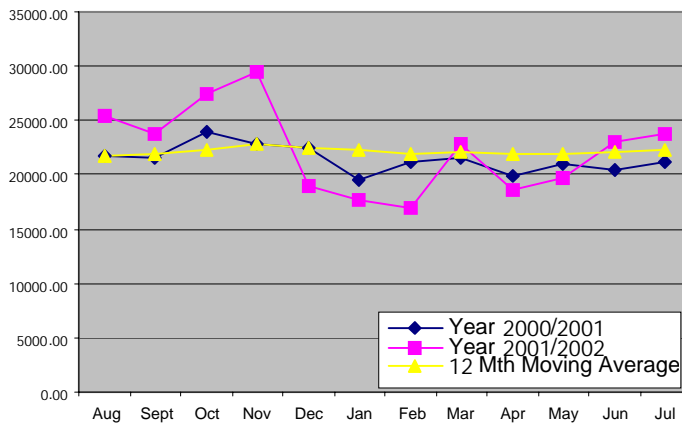
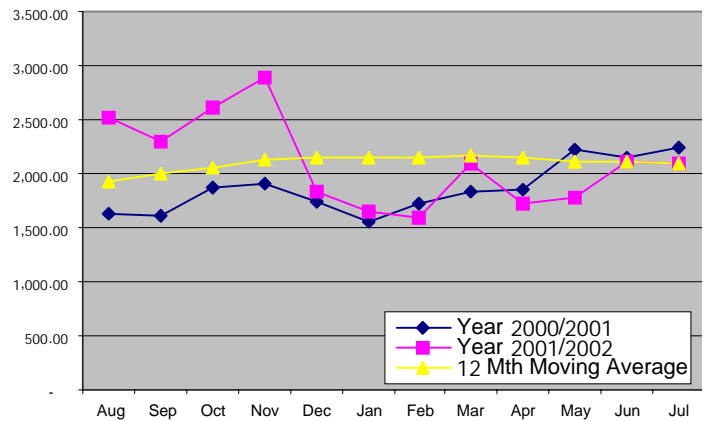


## AGGREGATE EXPORT INDEX

	May 2002	June 2002	July 2002	ACTUAL 2002 2th QTR	ACTUAL Jan - Dec 2001	ACTUAL August - 01
Quantity (MT)	19,757.18	23,109.36	23,725.43	61,521.80	269,691.19	25,337.69
% change Previous Year	↓ 5.66%	↑ 13.51%	↑ 11.97%	↓ 0.67%	↑ 10.38%	↑ 16.80%
12 Month Moving Avg	21,877.43	22,106.57	22,317.96	65,960.21		
Value (Thai Baht)	1,781,500,902	2,109,188,976	2,088,727,940	5,610,367,643	25,710,265,995	2,510,529,854
% change Previous Year	↓ 20.05%	↓ 1.80%	↓ 6.70%	↑ 9.9%	↑ 37.67%	↑ 53.66%
12 Month Moving Avg	2,113,962,264	2,110,740,063	2,098,162,595	6,375,902,787		

**QUANTITY (MT)**

**VALUE (MILLION BAHT)**


### TOP 20 EXPORTING COUNTRIES FOR THAI TUNA INDUSTRY (Based on Qty shipped)

	Country	July 2002		January – July 2002				January – July 2001	
		Quantity (Mt)	Value (Baht)	Quantity (Mt)	% Share	Value (Baht)	% Share	Quantity (Mt)	Value (Baht)
1	UNITED STATES	5,481.15	552,152,131	30,406.75	21.31	3,106,535,594	23.82	30,614.34	3,561,672,521
2	CANADA	2,246.33	214,756,259	12,656.22	8.87	1,321,640,291	10.14	13,923.39	1,503,465,510
3	EGYPT	1,897.60	120,697,771	11,367.31	7.97	776,353,180	5.95	16,601.11	1,021,344,860
4	JAPAN	1,540.61	192,423,296	9,224.75	6.46	1,121,667,650	8.60	7,719.64	966,001,756
5	AUSTRARIA	1,319.23	129,633,352	10,671.34	7.48	1,055,940,936	8.10	10,006.99	1,059,378,225
6	GERMANY	1,229.07	81,989,664	4,589.70	3.22	310,601,858	2.38	5,861.26	369,386,066
7	UNITED KINGDOM	1,118.07	98,253,549	7,559.46	5.30	656,831,592	5.04	6,904.39	590,118,149
8	POLAND	699.14	36,847,154	2,421.47	1.70	141,963,452	1.09	2,762.88	177,148,982
9	FINLAND	443.86	34,308,806	2,223.76	1.56	176,226,121	1.35	1,892.97	143,557,907
10	TAIWAN	433.17	23,033,191	838.09	0.59	59,506,631	0.46	1,012.11	105,932,028
11	SWEDEN	404.09	32,461,441	1,886.31	1.32	144,666,270	1.11	1,903.40	155,900,880
12	SYRIA	398.93	25,423,541	2,470.51	1.73	154,520,411	1.19	2,000.96	114,258,107
13	CHILES	395.35	25,490,989	1,449.39	1.02	87,763,675	0.67	595.61	35,487,785
14	JORDAN	332.29	28,430,210	1,403.51	0.98	113,156,717	0.87	1,118.82	87,651,625
15	LIBYA	303.50	20,692,779	4,423.97	3.10	296,606,047	2.27	95.02	5,852,431
16	UAE	282.78	22,645,142	2,640.75	1.85	226,101,523	1.73	2,171.65	208,102,451
17	NEW ZEALAND	281.57	26,871,910	1,802.49	1.26	183,048,609	1.40	1,411.81	145,075,194
18	YEMEN	271.68	16,903,154	771.42	0.54	21,337,453	0.16	339.92	29,596,454
19	ISRAEL	262.27	21,173,194	1,411.39	0.99	116,590,144	0.89	2,060.27	180,015,119
20	HONG KONG	248.87	23,818,469	1,606.01	1.13	159,415,133	1.22	1,469.20	1354,438,333
	TOP 20 TOTAL	19,589.56	1,728,006,002	111,824.60		10,230,473,287		110,465.74	11,814,384,383
	TOP 20 %SHARE	82.57	82.73	78.36	78.36	78.46	78.46	76.43	87.07
	GRAND TOTAL	23,725.43	2,088,727,940	142,701.85	100	13,039,347,587	100	144,530.32	13,569,045,430

NOTE : One Metric Ton is approximately equivalent to 113 cartons of 48/6.5oz canned tuna; 1 USDollar is equivalent to around 40 and 45 Baht in 2000 and 2001 respectively.  
SOURCE : The Customs Department (THAILAND)