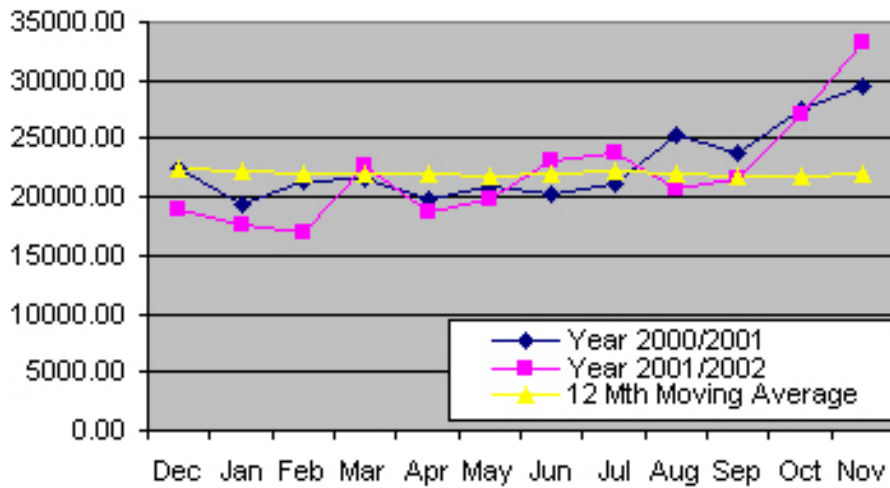


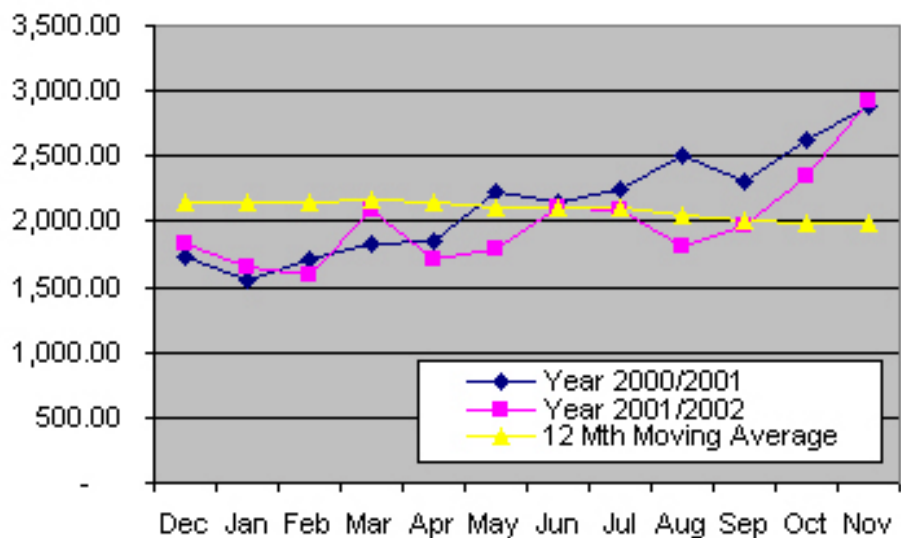
## AGGREGATE EXPORT INDEX

	September 2002	October 2002	November 2002	ACTUAL 2002 3th QTR	ACTUAL Jan - Dec 2001	ACTUAL November - 01
Quantity (MT)	21,667.06	27,080.82	33,227.82	66,156.42	269,691.19	29,539.00
% change Previous Year	♦ 9.05%	♦ 1.25%	♦ 12.48%	♦ 5.96%	♦ 10.38%	♦ 29.16%
12 Month Moving Avg	21,757.21	21,728,690	22,036,060	66,011.98		
Value (Thai Baht)	1,967,101,323	2,343,216,516	2,929,343,114	5,862,992,846	25,710,265,995	2,885,705,312
% change Previous Year	♦ 14.54%	♦ 10.41%	♦ 1.5%	♦ 16.95%	♦ 37.67%	♦ 51.79%
12 Month Moving Avg	2,011,611,967	1,988,982,992	1,992,619,475	6,149,373,302		

QUANTITY (MT)



VALUE (MILLION BAHT)



**TOP 20 EXPORTING COUNTRIES FOR THAI TUNA INDUSTRY (Based on Qty shipped)**

Country	November 2002		January – November 2002				January – November 2001	
	Quantity (Mt)	Value (Baht)	Quantity (Mt)	% Share	Value (Baht)	% Share	Quantity (Mt)	Value (Baht)
1 USA	9,968.83	1,411,259	54,112.94	22.05	5,415,979,297	24.52	58,163.63	6,680,709,218
2 CANADA	2,598.81	256,104,372	22,015.13	8.97	2,239,638,849	10.14	21,923.04	2,439,732,358
3 EGYPT	2,854.04	179,956,953	19,759.59	8.05	1,312,113,295	5.94	27,562.32	1,774,275,426
4 SAUDI ARABIA	2,096.32	211,979,401	11,454.84	4.67	1,151,036,070	5.21	11,765.85	1,201,158,659
5 GERMANY	1,595.24	103,400,473	8,666.42	3.53	576,047,571	2.61	9,528.75	621,318,462
6 UNITED KINGDOM	1,456.69	143,172,788	13,228.76	5.39	1,146,863,324	5.19	15,174.44	1,374,205,415
7 JAPAN	1,389.07	191,085,771	14,862.60	6.06	1,865,397,652	8.45	12,523.51	1,590,372,932
8 LIBYA	1,187.04	66,973,114	588.37	0.24	553,468,545	2.51	1121.201	68,539,644
9 SYRIA	1,028.50	59,465,600	5,007.19	2.04	300,046,988	1.36	3,492.02	198,523,546
10 POLAND	472.973	32,692,070	4,702.78	1.92	279,115,150	1.26	4,819.61	313,163,435
11 SOUTH AFRICA	471.952	40,898,902	2,414.82	0.98	212,732,143	0.96	2,790.37	260,280,258
12 NETHERLANDS	456.237	44,520,811	3,081.00	1.26	307,291,392	1.39	4,144.24	413,683,531
13 UNITED ARAB EMIRATES	364.478	36,036,958	3,839.11	1.56	325,537,596	1.47	3,786.24	348,506,574
14 LEBANON	345.942	39,412,906	229.34	0.09	243,207,720	1.10	3,456.46	375,699,947
15 CROATIA	319.92	16,775,197	1,464.08	0.60	78,982,575	0.36	946.69	63,541,386
16 HONG KONG	275.503	28,286,249	2,515.06	1.02	245,240,778	1.11	2,403.49	234,552,087
17 SWEDEN	262.827	21,569,220	3,008.92	1.23	235,624,231	1.07	3,179.36	262,155,129
18 SWITZERLAND	230.846	24,521,992	2,755.21	1.12	296,409,651	1.34	11.54	918,220
19 CZECH REPUBLIC	215.949	13,443,072	1,932.26	0.79	116,813,789	0.53	2,363.51	137,313,428
20 DOMINICAN REPUBLIC	208.768	15,150,051	1,321.53	0.54	101,228,394	0.46	728.87	62,907,130
TOP 20 TOTAL	27,800	1,526,857,159	176,960	72	17,002,775,010	77	189,885	18,421,556,785
TOP 20 %SHARE	84	52	72		77		76	77
GRAND TOTAL	33,227.4	2,929,343,114	245,450		22,086,172,123	100	250,535.18	23,882,802,387

NOTE : One Metric Ton is approximately equivalent to 113 cartons of 48/6.5oz canned tuna; 1 USDollar is equivalent to around 40 and 45 Baht in 2000 and 2001 respectively.  
SOURCE : The Customs Department (THAILAND)