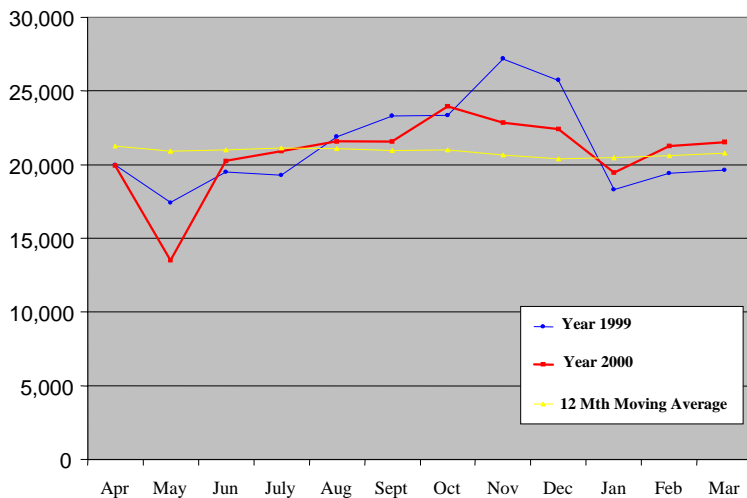


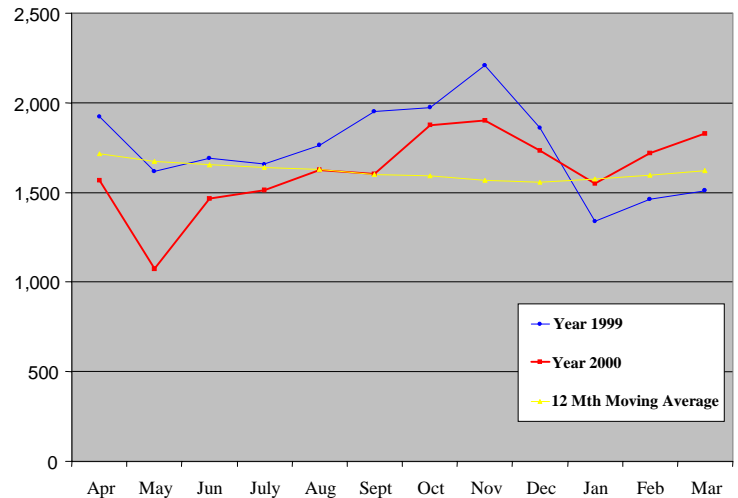
## AGGREGATE EXPORT INDEX

	January 2001	February 2001	March 2001	ACTUAL 2001 1st QTR	ACTUAL Jan - Dec 2000	ACTUAL Apr - 00
Quantity (MT)	19,471.21	21,246.94	21,511.43	62,229.58	244,329.094	19,962.61
% change Previous Year	▲ 6.32%	▲ 9.42%	▲ 9.62%	▲ 8.5%	▼ -5.46%	▼ -0.38%
12 Month Moving Avg	20,457.22	20,609.67	20,767.05	61,833.94		
Value (Thai Baht)	1,550,716,924	1,718,629,450	1,828,435,450	5,097,781,824	18,675,556,984	1,566,841,334
% change Previous Year	▲ 15.82%	▲ 17.53%	▲ 21.02%	▲ 18.22%	▼ -14.45%	▼ -18.73%
12 Month Moving Avg	1,573,949,460	1,595,315,791	1621778752	4,791,044,003		

### QUANTITY (MT)



### VALUE (MILLION BAHT)



### TOP 20 EXPORTING COUNTRIES FOR THAI TUNA INDUSTRY (Based on Qty shipped)

	Country	Mar - 01		January - March 2001				January - December 2000	
		Quantity (Mt)	Value (Baht)	Quantity (Mt)	% Share	Value (Baht)	% Share	Quantity (Mt)	Value (Baht)
1	UNITED STATE	4,071.89	443,892,525	11,922.29	19.16	1,197,620,616	23.49	62,615.94	5,046,240,667
2	CANADA	2,428.80	212,166,852	6,306.45	10.13	597,838,764	11.73	23,718.25	2,089,961,678
3	EGYPT	1,775.66	106,182,056	7,017.11	11.28	406,143,572	7.79	27,572.68	1,586,166,032
4	AUSTRALIA	1,588.38	146,847,816	4,420.02	7.10	421,546,213	8.27	18,579.02	1,534,311,375
5	JAPAN	1,281.69	151,932,323	3,384.99	5.44	404,691,890	7.94	14,116.13	1,502,878,705
6	UNITED KINGDOM	1,105.76	77,414,930	2,454.62	3.94	162,341,580	3.18	13,078.18	919,335,338
7	SAUDI ARABIA	1,557.26	138,610,036	3,705.77	5.95	328,516,302	6.44	6,118.19	528,162,405
8	ARGENTINA	870.94	50,290,909	3,372.40	5.42	184,589,140	3.62	7,448.34	405,801,730
9	NETHERLANDS	601.85	55,865,192	1,113.85	1.79	94,291,009	1.85	3,998.18	339,605,499
10	UNITED ARAB EMIRATES	351.77	27,419,820	967.21	1.55	81,485,726	1.60	3,436.99	280,241,972
11	SWITZERLAND	163.62	15,410,808	409.26	0.66	34,482,615	0.68	3,078.34	277,766,549
12	LEBANON	193.47	20,384,637	539.07	0.87	54,203,420	1.06	2,718.61	255,737,272
13	GERMANY	1,007.76	59,411,006	2,284.81	3.67	126,517,745	2.48	4,275.26	234,338,573
14	SWEDEN	240.85	19,418,320	669.60	1.08	48,198,468	0.95	3,231.50	227,186,843
15	FINLAND	464.03	23,494,938	867.47	1.39	50,561,312	0.99	3,071.18	218,612,361
16	POLAND	313.76	17,818,313	887.23	1.43	52,504,498	1.03	3,494.69	205,006,499
17	NEW ZEALAND	212.33	19,712,702	466.58	0.75	43,946,214	0.86	2,524.11	204,693,786
18	SOUTH AFRICA	380.84	29,884,330	892.76	1.43	70,837,211	1.39	2,447.05	191,336,707
19	SYRIAN ARAB REPUBLIC	191.21	10,597,179	1,641.38	2.64	88,152,129	1.73	3,460.97	186,296,409
20	HONG KONG	215.40	17,351,646	545.40	0.88	42,059,115	0.83	2,413.82	178,626,315
	TOP 20 TOTAL	19,017.27	1,644,106,338	53,868.25		4,490,527,539		211,397.42	16,412,306,715
	TOP 20 %SHARE	88.41	89.92	86.56	86.56	88.09	88.09	86.51	87.87
	GRAND TOTAL	21,511.43	1,828,435,450	62,229.58	100	5,067,781,824	100	244,365.93	18,678,382,101

NOTE: One Metric Ton is approximately equivalent to 113 cartons of 48/6.5oz canned tuna; 1 USDollar is equivalent to around 40 and 45 Baht in 2000 and 2001 respectively.  
SOURCE: The Customs Department (THAILAND)