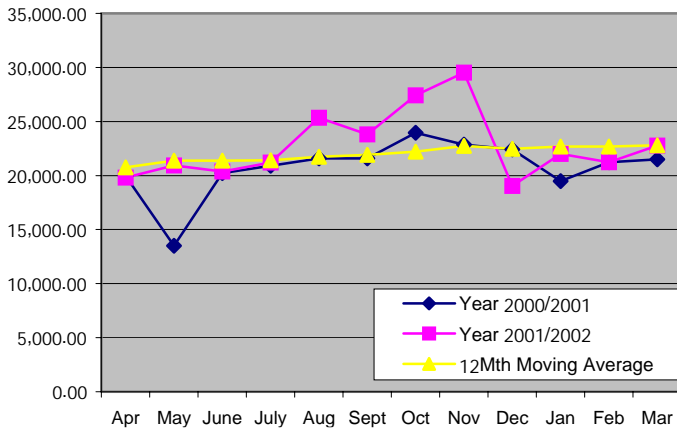
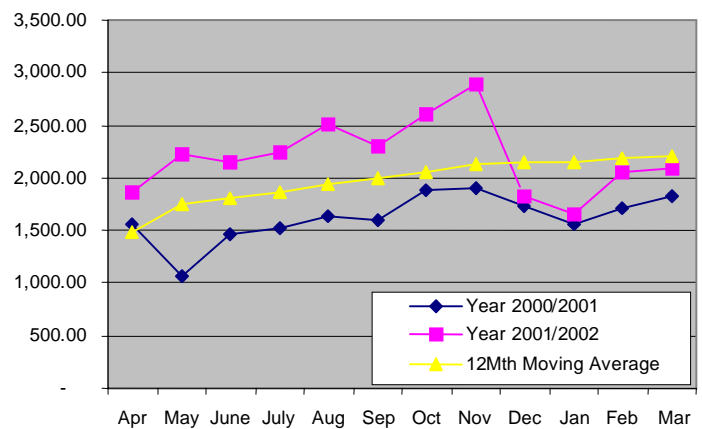


## AGGREGATE EXPORT INDEX

	January 2002	February 2002	March 2002	ACTUAL 2002 1th QTR	ACTUAL Jan - Dec 2001	ACTUAL April - 01
Quantity (MT)	22,001.59	21,247.06	22,685.20	65,933.85	269,691.19	19,809.73
% change Previous Year	▲ 12.9955%	▲ 0.0006%	▲ 5.4664%	▲ 5.9526%	▲ 10.38%	▼ 0.7658%
12 Month Moving Avg	22,685.19	22,768.99	22,790.00	68,244.18		
Value (Thai Baht)	1,652,432,719	2,053,003,952	2,091,087,418	5,796,524,089	25,710,265,995	1,855,391,408
% change Previous Year	▲ 6.5593%	▲ 19.4559%	▲ 14.3648%	▲ 13.7068%	▲ 37.67%	▲ 18.4160%
12 Month Moving Avg	2,150,998,483	2,178,863,024	2,200,750,688	6,530,612,195		

**QUANTITY (MT)**

**VALUE (MILLION BAHT)**


### TOP 20 EXPORTING COUNTRIES FOR THAI TUNA INDUSTRY (Based on Qty shipped)

	Country	March 2002		January – March 2002				January – March 2001	
		Quantity (Mt)	Value (Baht)	Quantity (Mt)	% Share	Value (Baht)	% Share	Quantity (Mt)	Value (Baht)
1	UNITED STATES	3,697.70	385,634,312	10,067.58	23.28	1,066,343,899	64.53	11,922.29	1,197,620,616
2	CANADA	2,148.05	230,815,664	4,907.41	11.35	551,017,886	33.35	6,306.45	597,838,764
3	EGYPT	2,077.12	148,333,838	5,585.02	12.91	388,508,571	23.51	7,017.11	406,143,572
4	SAUDI ARABIA	1,813.12	189,848,678	4,024.48	9.31	420,239,581	25.43	3,705.77	328,516,302
5	AUSTRALIA	1,585.20	151,288,108	4,297.26	9.94	425,890,943	25.77	4,420.02	421,546,213
6	JAPAN	1,516.40	182,647,787	3,821.39	8.84	460,957,740	27.90	3,385.00	404,691,891
7	UNITED KINGDOM	1,444.29	122,074,216	2,995.42	6.93	267,257,835	16.17	2,454.62	162,341,580
8	LIBYA	842.48	56,385,804	1,997.15	4.62	129,274,984	7.82	N/A	N/A
9	UAE	600.83	52,168,540	1,253.89	2.90	110,347,269	6.68	967.21	81,485,726
10	SYRIA	469.31	30,152,643	1,079.11	2.50	67,803,872	4.10	1,641.38	88,152,129
11	NETHERLANDS	440.32	44,344,323	818.14	1.89	83,003,033	5.02	1,113.85	94,291,009
12	FINLAND	360.43	27,659,064	822.33	1.90	66,225,354	4.01	867.47	50,561,312
13	POLAND	360.12	22,155,889	1,115.09	2.58	67,505,693	4.09	887.23	52,504,498
14	CZECH REPUBLIC	333.26	17,458,494	553.94	1.28	30,254,543	1.83	656.76	33,538,644
15	LEBANON	327.57	35,102,282	736.80	1.70	79,395,622	4.80	539.07	54,203,420
16	NEW ZELAND	269.02	27,446,346	822.63	1.90	84,462,909	5.11	466.58	43,946,214
17	GERMANY	267.91	18,150,543	1,314.22	3.04	93,196,559	5.64	2,284.81	126,517,745
18	ARGENTINA	238.69	1,143,947	254.18	0.59	12,202,864	0.74	3,372.40	184,589,140
19	SWEDEN	232.20	18,464,210	654.47	1.51	49,340,317	2.99	669.60	48,198,468
20	SOUTH AFRICA	231.01	21,708,109	792.46	1.83	71,281,993	4.31	892.76	70,837,211
	TOP 20 TOTAL	19,255.03	1,738,682,818	47,912.97		4,524,511,467		5,3570.38	4,285,183,036
	TOP 20 %SHARE	84.88	83.15	83.39	83.39	84.72	84.72	86.08	84.06
	GRAND TOTAL	22,685.20	2,091,087,418	57,454.61	100	5,340,252,004	100	62,228.58	5,097,781,824

NOTE: One Metric Ton is approximately equivalent to 113 cartons of 48/6.5oz canned tuna; 1 US Dollar is equivalent to around 40 and 45 Baht in 2000 and 2001 respectively.  
SOURCE: The Customs Department (THAILAND)