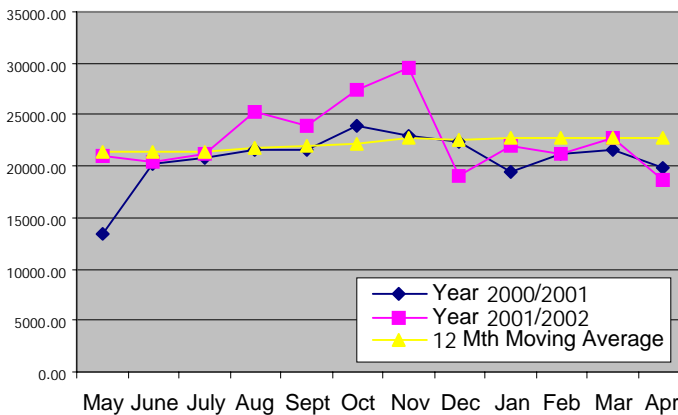
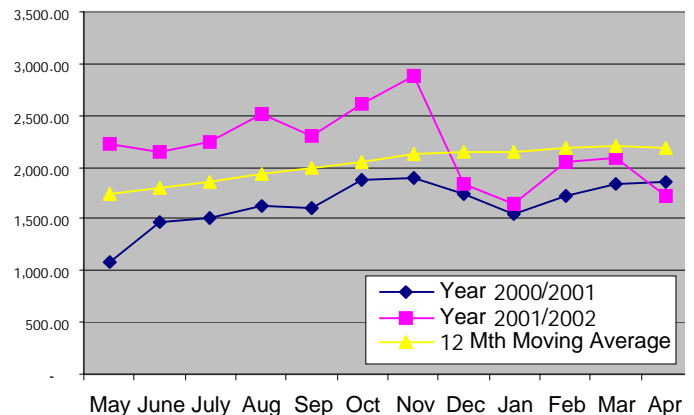


AGGREGATE EXPORT INDEX

	February 2002	March 2002	April 2002	ACTUAL 2002 1th QTR	ACTUAL Jan - Dec 2001	ACTUAL May - 01
Quantity (MT)	17021.79	22,768.99	18,655.27	57,454.61	269,691.19	20,942.50
% change Previous Year	↓ 19.89%	↑ 5.85%	↓ 5.83%	↓ 7.67%	↑ 10.38%	↑ 54.5994%
12 Month Moving Avg	21,971.61	22,076.41	21,980.21	66,371.40		
Value (Thai Baht)	1,594,114,859	2,091,087,418	1,719,677,765	5,340,252,004	25,710,265,995	2,228,359,258
% change Previous Year	↓ 7.24%	↑ 14.36%	↓ 7.31%	↑ 4.54%	↑ 37.67%	↑ 106.6440%
12 Month Moving Avg	2,140,840,351	2,162,728,015	2,151,418,544	6,454,784,933		

QUANTITY (MT)

VALUE (MILLION BAHT)


TOP 20 EXPORTING COUNTRIES FOR THAI TUNA INDUSTRY (Based on Qty shipped)

	Country	April 2002		January – April 2002				January – April 2001	
		Quantity (Mt)	Value (Baht)	Quantity (Mt)	% Share	Value (Baht)	% Share	Quantity (Mt)	Value (Baht)
1	UNITED STATES	3,807.90	384,347,358	13,875.47	18.23	1,450,691,257	20.55	16,501.38	1,722,902,158
2	AUSTRARIA	2,076.19	203,299,215	6,373.44	8.37	629,190,158	8.91	5,937.06	581,704,424
3	EGYPT	1,581.54	113,234,301	7,166.56	9.42	501,742,872	7.12	9,564.81	575,920,585
4	CANADA	1,269.57	133,138,325	6,176.98	8.12	684,156,211	9.69	8,159.12	775,988,683
5	JAPAN	1,260.93	151,852,056	5,082.31	6.68	612,809,796	8.68	4,256.67	510,272,813
6	UNITED KINGDOM	1,155.88	101,425,952	4,151.31	5.45	368,683,787	5.22	3,517.01	246,585,221
7	SAUDI ARABIA	571.380	53,496,860	4,595.85	6.04	473,736,441	6.71	5,380.34	490,229,573
8	SYRIA	456.43	26,977,599	1,535.54	2.02	94,781,471	1.34	1,798.89	98,901,494
9	UAE	407.80	40,568,179	1,661.69	2.18	150,915,448	2.14	1,244.36	106,499,634
10	JORDAN	351.78	29,724,122	854.32	1.12	67,275,382	0.95	680.65	48,949,065
11	SWITZERLAND	341.33	33,357,924	1,151.31	1.51	120,666,169	1.71	529.57	50,121,144
12	FINLAND	338.29	26,152,571	1,160.61	1.52	92,377,925	1.31	1,239.55	82,252,514
13	HONG KONG	331.08	35,712,163	964.71	1.27	96,518,200	1.37	650.52	51,867,236
14	LIBYA	269.95	21,017,719	2,267.10	2.98	150,292,703	2.13	N/A	N/A
15	SWEDEN	245.35	16,330,447	899.82	1.19	65,670,764	0.93	884.81	65,998,561
16	GERMANY	220.52	14,471,733	1,534.74	2.02	107,668,292	1.53	3,001.74	169,306,784
17	NEW ZELAND	215.68	22,202,585	1,038.31	1.36	106,665,494	1.51	694.88	66,723,183
18	CROATIA	210.44	11,659,921	386.40	0.51	22,282,251	0.32	164.98	11,053,535
19	ROMANIA	203.69	11,474,546	380.76	0.50	21,366,880	0.30	227.16	11,241,098
20	CZECH REPUBLIC	200.81	11,270,496	754.75	0.99	41,525,039	0.59	831.91	43,097,287
	TOP 20 TOTAL	15,516.54	1,441,714,072	62,011.98		5,859,016,540		65,265.41	5,709,614,992
	TOP 20 %SHARE	83.18	83.84	81.48	81.48	82.99	82.99	79.55	82.12
	GRAND TOTAL	18,655.27	1,719,677,765	76,109.88	100	7,059,929,769	100	82,039.31	6,953,173,232

NOTE: One Metric Ton is approximately equivalent to 113 cartons of 48/6.5oz canned tuna; 1 US Dollar is equivalent to around 40 and 45 Baht in 2000 and 2001 respectively.

SOURCE: The Customs Department (THAILAND)