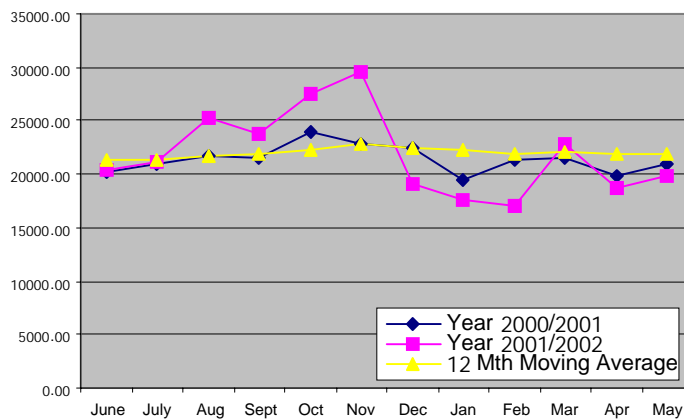
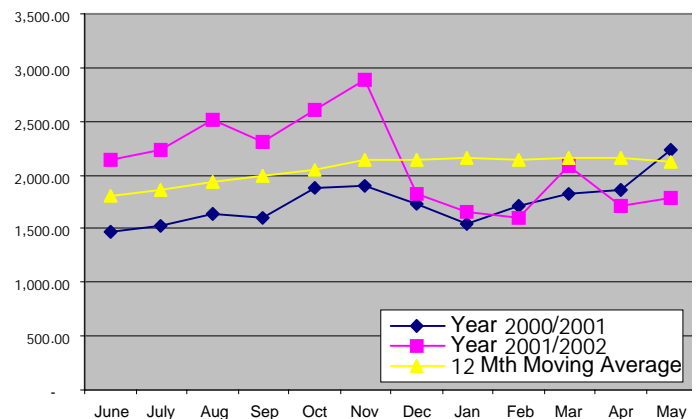


**AGGREGATE EXPORT INDEX**

	March 2002	April 2002	May 2002	ACTUAL 2002 1th QTR	ACTUAL Jan - Dec 2001	ACTUAL June - 01
Quantity (MT)	22,768.99	18,655.27	19,757.18	57,454.61	269,691.19	20,359.74
% change Previous Year	▲ 5.85%	▼ 5.83%	▼ 5.66%	▼ 7.67%	▲ 10.38%	▲ 0.47%
12 Month Moving Avg	22,076.41	21,980.21	21,877.43	66,371.40		
Value (Thai Baht)	2,091,087,418	1,719,677,765	1,781,500,902	5,340,252,004	25,710,265,995	2,147,855,387
% change Previous Year	▲ 14.36%	▼ 7.31%	▼ 20.05%	▲ 4.54%	▲ 37.67%	▲ 46.19%
12 Month Moving Avg	2,162,728,015	2,151,418,544	2,113,962,264	6,454,784,933		

**QUANTITY (MT)**

**VALUE (MILLION BAHT)**

**TOP 20 EXPORTING COUNTRIES FOR THAI TUNA INDUSTRY (Based on Qty shipped)**

Country	May 2002		January – May 2002				January – May 2001	
	Quantity (Mt)	Value (Baht)	Quantity (Mt)	% Share	Value (Baht)	% Share	Quantity (Mt)	Value (Baht)
1 UNITED STATES	5,197.65	523,586,668	19,073.12	19.90	1,974,277,925	22.33	20,620.05	2,284,823,901
2 CANADA	1,706.86	168,234,019	7,883.84	8.22	852,390,230	9.64	10,222.82	1,021,756,662
3 JAPAN	1,275.98	158,749,523	6,358.29	6.63	771,559,319	8.73	5,416.19	659,589,702
4 UNITED KINGDOM	1,253.67	103,552,225	5,404.97	5.64	472,236,012	5.34	4,607.77	353,055,970
5 AUSTRARIA	1,240.63	129,926,579	7,614.07	7.94	759,116,737	8.59	7,449.77	762,115,990
6 GERMANY	1,149.08	73,644,796	2,683.82	2.80	181,313,088	2.05	3,718.10	214,504,828
7 EGYPT	1,131.99	77,317,151	8,298.55	8.66	579,060,023	6.55	11,890.28	729,517,561
8 LIBYA SYRIA	952.36	58,746,859	3,219.46	3.36	209,039,562	2.36	95.02	5,852,431
9 UAE	417.36	30,629,685	2,079.05	2.17	181,545,133	2.05	1,495.91	134,938,582
10 NETHERLANDS	412.96	44,183,407	1,422.32	1.48	140,926,291	1.59	1,861.31	175,913,486
11 SYRIA	290.95	18,659,340	1,826.50	1.91	113,440,811	1.28	1,845.91	101,600,560
12 POLAND	262.27	16,232,346	1,470.54	1.53	90,407,198	1.02	1,681.10	106,311,189
13 ROMANIA	236.15	12,311,002	616.91	0.64	33,677,882	0.38	275.11	14,298,978
14 SWITZERLAND	235.29	27,275,734	1,386.60	1.45	147,941,903	1.67	810.38	89,410,737
15 FINLAND	221.59	17,832,560	1,382.20	1.44	110,210,485	1.25	1,523.20	109,193,876
16 NEW ZELAND	198.35	20,519,249	1,236.66	1.29	127,184,743	1.44	954.16	94,130,932
17 DENMARK	188.13	16,895,926	672.97	0.70	57,922,970	0.66	512.92	44,575,379
18 SOUTH AFRICA	181.13	16,822,427	1,106.84	1.15	99,441,612	1.12	1,347.22	116,052,537
19 HONG KONG	175.39	14,881,943	1,140.09	1.19	111,400,143	1.26	906.44	77,942,437
20 SAUDI ARABIA	172.12	14,083,347	4,767.97	4.97	487,819,788	5.52	6,261.46	587,259,282
TOP 20 TOTAL	16,899.91	1,544,084,786	79,644.77		7,500,911,855		83,495.12	7,682,845,020
TOP 20 %SHARE	85.54	86.67	83.08	83.08	84.84	84.84	81.08	83.68
GRAND TOTAL	19,757.18	1,781,500,902	95,867.06	100	8,841,430,671	100	102,981.81	9,181,532,490

NOTE : One Metric Ton is approximately equivalent to 113 cartons of 48/6.5oz canned tuna; 1 USDollar is equivalent to around 40 and 45 Baht in 2000 and 2001 respectively.  
 SOURCE : The Customs Department (THAILAND)