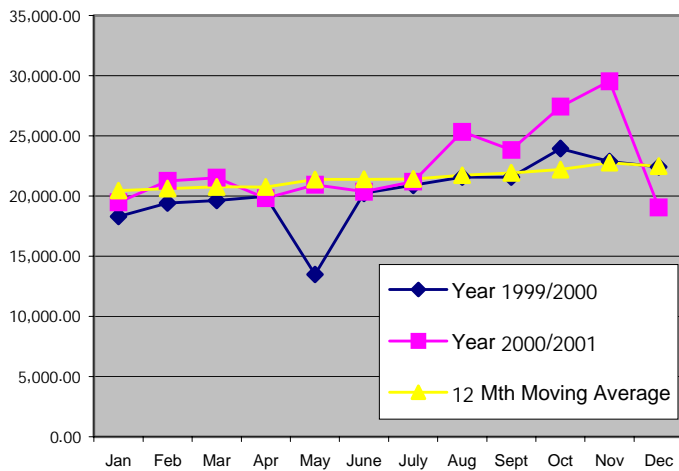
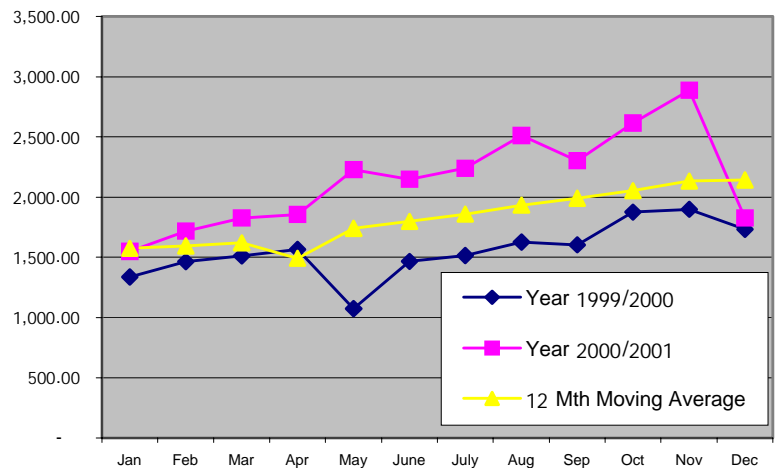


AGGREGATE EXPORT INDEX

	October 2001	November 2001	December 2001	ACTUAL 2001 4th QTR	ACTUAL Jan - Dec 2000	ACTUAL Jan - 01
Quantity (MT)	27,422.10	29,539.00	19,040.58	76,001.68	244,329.09	19,471.20
% change Previous Year	▲ 14.49%	▲ 29.16%	▼ -15.00%	▲ 9.77%	▼ -5.46%	▲ 6.32%
12 Month Moving Avg	22,199.84	22,755.66	22,474.33	67,429.83		
Value (Thai Baht)	2,615,364,224	2,885,705,312	1,827,878,589	5,502,897,415	18,675,556,984	1,550,716,924
% change Previous Year	▲ 39.36%	▲ 51.90%	▲ 5.40%	▲ 33.00%	▼ -14.45%	▲ 15.82%
12 Month Moving Avg	2,052,547,681	2,134,718,765	2,142,522,166	6,329,788,612		

QUANTITY (MT)

VALUE (MILLION BAHT)


TOP 20 EXPORTING COUNTRIES FOR THAI TUNA INDUSTRY (Based on Qty shipped)

	Country	December - 2001		January - December 2001				January - December 2000	
		Quantity (Mt)	Value (Baht)	Quantity (Mt)	% Share	Value (Baht)	% Share	Quantity (Mt)	Value (Baht)
1	UNITED STATES	2,686.71	335,332,662	60,850.34	22.58	7,016,031,880	27.30	62,615.94	5,046,240,667
2	CANADA	2,143.28	237,349,366	24,066.32	8.93	2,677,081,724	10.42	23,718.25	2,089,961,678
3	EGYPT	2,124.49	154,561,565	29,686.82	11.01	1,928,836,991	7.51	27,572.68	1,586,166,032
4	AUSTRALIA	1,507.52	150,214,843	17,581.99	6.52	1,851,264,887	7.20	18,579.02	1,534,311,375
5	JAPAN	1,165.52	147,901,455	13,689.03	5.08	1,738,274,387	6.76	14,116.13	1,502,878,705
6	UNITED KINGDOM	900.69	88,789,885	16,075.13	5.96	1,462,995,300	5.69	13,078.18	919,335,338
7	GERMANY	843.98	58,885,147	10,372.73	3.85	680,203,609	2.65	4,275.26	234,338,573
8	SAUDI ARABIA	651.83	66,607,908	12,417.68	4.61	1,267,766,567	4.93	6,118.19	528,162,405
9	LIBIA	576.39	35,480,246	1,697.59	0.63	104,019,890	0.40	1,758.06	84,136,808
10	ISRAEL	510.38	43,573,106	3,611.93	1.34	315,896,943	1.23	2,642.56	173,609,907
11	ARGENTINA	483.86	31,542,163	9,329.87	3.46	565,666,820	2.20	7,448.34	405,801,730
12	SWEDEN	411.88	34,416,490	3,591.23	1.33	296,571,619	1.15	3,231.50	227,186,843
13	SYRIA	366.91	28,451,118	3,858.94	1.43	226,974,664	0.88	3,460.97	186,296,409
14	UAE	357.42	32,642,453	4,143.65	1.54	381,149,027	1.48	3,436.99	280,241,972
15	FINLAND	331.17	26,015,662	3,258.71	1.21	251,426,073	0.98	3,071.18	218,612,361
16	POLAND	279.49	15,973,824	5,099.10	1.89	329,137,259	1.28	3,494.69	205,006,499
17	DENMARK	254.90	20,836,087	1,384.46	0.51	130,120,138	0.51	1,187.94	92,846,844
18	NETHERLANDS	220.27	21,534,599	4,364.51	1.62	435,218,130	1.69	3,998.18	339,605,499
19	LEBANON	215.91	25,459,117	3,672.37	1.36	401,159,064	1.56	2,718.61	255,737,272
20	HONGKONG	208.92	22,172,118	2,612.40	0.97	256,724,205	1.00	2,413.82	178,626,315
	TOP 20 TOTAL	16,241.52	1,577,739,814	231,364.80		22,316,519,177		208,936.49	16,089,103,232
	TOP 20 %SHARE	85.30	86.32	85.84	85.84	86.84	86.84	85.58	86.21
	GRAND TOTAL	19,040.58	1,827,878,589	269,519.39	100	25,697,899,830	100	244,137.68	18,662,211,056

NOTE: One Metric Ton is approximately equivalent to 113 cartons of 48/6.5oz canned tuna; 1 US Dollar is equivalent to around 40 and 45 Baht in 2000 and 2001 respectively.
 SOURCE: The Customs Department (THAILAND)